

GSTO1 Antibody (Center)
Purified Rabbit Polyclonal Antibody (Pab)
Catalog # AP2930C**Specification**

GSTO1 Antibody (Center) - Product Information

Application	WB, FC, IHC-P,E
Primary Accession	P78417
Reactivity	Human
Host	Rabbit
Clonality	Polyclonal
Isotype	Rabbit IgG
Calculated MW	27566
Antigen Region	126-155

GSTO1 Antibody (Center) - Additional Information**Gene ID** 9446**Other Names**

Glutathione S-transferase omega-1, GSTO-1, Glutathione S-transferase omega 1-1, GSTO 1-1, Glutathione-dependent dehydroascorbate reductase, Monomethylarsonic acid reductase, MMA(V) reductase, S-(Phenacyl)glutathione reductase, SPG-R, GSTO1, GSTTLP28

Target/Specificity

This GSTO1 antibody is generated from rabbits immunized with a KLH conjugated synthetic peptide between 126-155 amino acids from the Central region of human GSTO1.

Dilution

WB~~1:1000
FC~~1:10~50
IHC-P~~1:50~100
E~~Use at an assay dependent concentration.

Format

Purified polyclonal antibody supplied in PBS with 0.09% (W/V) sodium azide. This antibody is prepared by Saturated Ammonium Sulfate (SAS) precipitation followed by dialysis against PBS.

Storage

Maintain refrigerated at 2-8°C for up to 2 weeks. For long term storage store at -20°C in small aliquots to prevent freeze-thaw cycles.

Precautions

GSTO1 Antibody (Center) is for research use only and not for use in diagnostic or therapeutic procedures.

GSTO1 Antibody (Center) - Protein Information

Name GSTO1

Synonyms GSTTLP28

Function Exhibits glutathione-dependent thiol transferase and dehydroascorbate reductase activities. Has S-(phenacyl)glutathione reductase activity. Also has glutathione S-transferase activity. Participates in the biotransformation of inorganic arsenic and reduces monomethylarsonic acid (MMA) and dimethylarsonic acid.

Cellular Location

Cytoplasm, cytosol.

Tissue Location

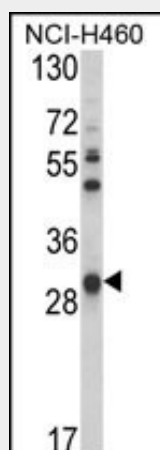
Ubiquitous. Highest expression in liver, pancreas, skeletal muscle, spleen, thymus, colon, blood leukocyte and heart. Lowest expression in brain, placenta and lung.

GSTO1 Antibody (Center) - Protocols

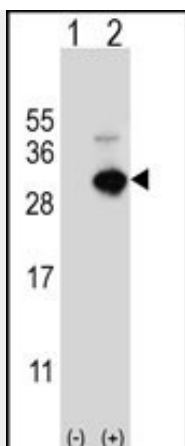
Provided below are standard protocols that you may find useful for product applications.

- [Western Blot](#)
- [Blocking Peptides](#)
- [Dot Blot](#)
- [Immunohistochemistry](#)
- [Immunofluorescence](#)
- [Immunoprecipitation](#)
- [Flow Cytometry](#)
- [Cell Culture](#)

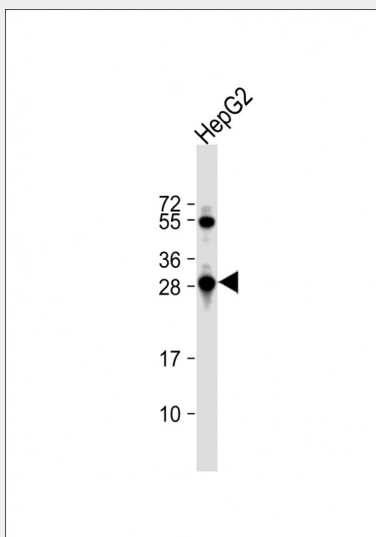
GSTO1 Antibody (Center) - Images



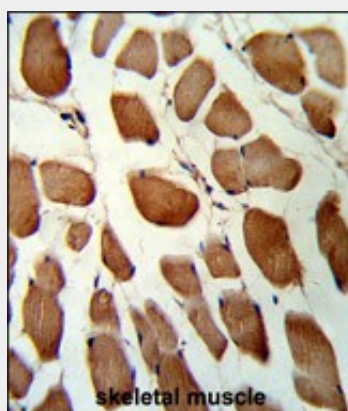
Western blot analysis of GSTO1 Antibody (Center) (Cat. #AP2930c) in NCI-H460 cell line lysates (35ug/lane). GSTO1 (arrow) was detected using the purified Pab.



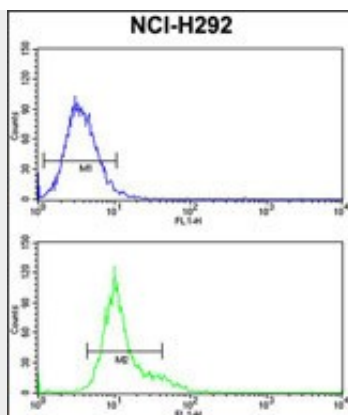
Western blot analysis of GSTO1 (arrow) using rabbit polyclonal GSTO1 Antibody (Center) (Cat. #AP2930c). 293 cell lysates (2 ug/lane) either nontransfected (Lane 1) or transiently transfected (Lane 2) with the GSTO1 gene.



Anti-GSTO1 Antibody (Center) at 1:1000 dilution + HepG2 whole cell lysate Lysates/proteins at 20 µg per lane. Secondary Goat Anti-Rabbit IgG, (H+L), Peroxidase conjugated at 1/10000 dilution. Predicted band size : 28 kDa Blocking/Dilution buffer: 5% NFDM/TBST.



Formalin-fixed and paraffin-embedded human skeletal muscle reacted with GSTO1 Antibody (Center), which was peroxidase-conjugated to the secondary antibody, followed by DAB staining. This data demonstrates the use of this antibody for immunohistochemistry; clinical relevance has not been evaluated.



GSTO1 Antibody (Center) (Cat. #AP2930c) flow cytometry analysis of NCI-H292 cells (bottom histogram) compared to a negative control cell (top histogram). FITC-conjugated goat-anti-rabbit secondary antibodies were used for the analysis.

GSTO1 Antibody (Center) - Background

GSTO1 is a member of the theta class glutathione S-transferase-like (GSTTL) protein family. In mouse, this protein acts as a small stress response protein, likely involved in cellular redox homeostasis.

GSTO1 Antibody (Center) - References

Wang, Y.H., et.al., Toxicol. Appl. Pharmacol. 241 (1), 111-118 (2009)